



# SHIVER

## Technical rider

update : 10th feb 2014

Premiere at Theater l'Arsenic in Lausanne/Suisse the 4th of february 2014

### Equipe

---

Booking :	mm - Michaël Monney	touring@nicoleseiler.com Tel +41 (0)21 566 70 32
Tech management :	Stéphane Gattoni	technique@nicoleseiler.com Mobile +41 (0)76 524 29 30
Sound design :	Stéphane Vecchione	svecchione@bluwin.ch Mobile +41 (0)79 479 98 12
Artistic director :	Nicole Seiler	info@nicoleseiler.com Mobile : +41 (0)76 562 78 94
Travelling people:	4 dancers 2-3 techs (sound, light, stage if necessary) 1 artistic director 1 tour manager  -> 8-9 people on tour	

### General informations

---

Duration of the performance: 55 min without intermission

The company requires an 8-hour day before the day of the show, and then 4 hours on the day of the show (12 hours of tech time in the theatre prior to the first performance)

**Note :** This show needs a very deep black out. Thank you to eliminate as much as possible all interfering lights (security lights, house lights, ...)

If any of our requests are problematic, please don't hesitate to contact the technical manager of the company at least 2 weeks before the show. Solutions can be worked out.

## Stage

---

Min. stage width : 12 m (preferred 14 m)  
 Min. stage depth: 10 m (preferred 12 m)  
 Min. height: 5.50 m

Flat floor. Black dance floor.

The company provides a black (8m x 4m) curtain hanged with a track. We need 6 rigging points.

The Black Box depends on the venue. Please contact the tech manager to decide which type of black box will be installed in your venue.

1 table to be put in the wings (size about 80x150cm) with a mirror for accessories and costume change during the performance

## Crew and typical planning

---

day	hours	To do	crew
D-1	9h-13h	Pre-hang (lay and tape the dance floor, hang all masking)	1 stage manager 1 stagehand
	14h-18h	Get in Hang light and sound, Rigging of our curtain	1 stage manager 1 electrician 1 sound operator
	19h30-22h	Light focus and video	1 stage manager 1 electrician
D	9h-13h	tech time (if necessary). Sound Balance	1 stage manager 1 sound operator
	14h-18h	Rehearsals	1 stage manager
	20h30-21h45	PERFORMANCE	1 stage manager
	21h45-22h30	taking down	1 stage manager 1 electrician 1 sound operator

It's necessary that the stage manager is the same for the rehearsal and the performance. We need him to manipulate our curtain. He must speak english (or french !)

If more than 1 performance is played, thank you to provide 1 person for cleaning the costumes.

---

## Light and video

---

38 dimmers 10A (2 kW), DMX protocol, without house lighting

17 PC 650W (ou 1kW)

6 profiles spot 1kW (type Robert Juliat 614sx)

10 short profiles spot 1kW (type Robert Juliat 613sx)

4 PAR64 cp62

1 PAR64 cp61

5 F1 (pinspot)

2 cycs 1kW

11 floor stands

2 stands height 1m80

All lighting instruments must be fitted with clamp and safety wire.

The house light must be controlled from the lighting desk.

1 pt DMX 5 pins for our video shutter

Gels (to provide) : Rosco 371, 372; Lee 027, 120HT, 200, 711, 789

We will provide, upon receipt of detailed technical information of your venue, a specific light plot.

### Video

The company provides one video beamer. One point for the rig must be provided in front of house, projection angle 20-25°.

Thank you to provide 1 computer screen, with VGA cable

*The company provides:*

*1 lighting console*

*1 video beamer*

*1 computer for video*

*1 video camera*

*1 video mixer Edirol V4*

*1 VGA cable*

*1 composite cable*

## **Sound**

---

1 mixing desk with min. 8 inputs and 10 outputs, with compression and reverb effects.

1 headset HF microphone

2 stereo speakers hanged backstage, with additionnal sub-bass speakers (OUT 1 & 2)

2 stereo speakers hanged each side of stage (OUT 3 & 4)

1 speaker hanged in the center of the stage at the back (OUT 5)

2 speakers on the floor (OUT 7 & 8)

2 monitors speakers on the floor (OUT 9 & 10)

The sound system must be a professional system and all cables must be provided

3 Intercoms

*The company provides:*    1 computer (Ableton Live)  
                                      1 sound card MOTU

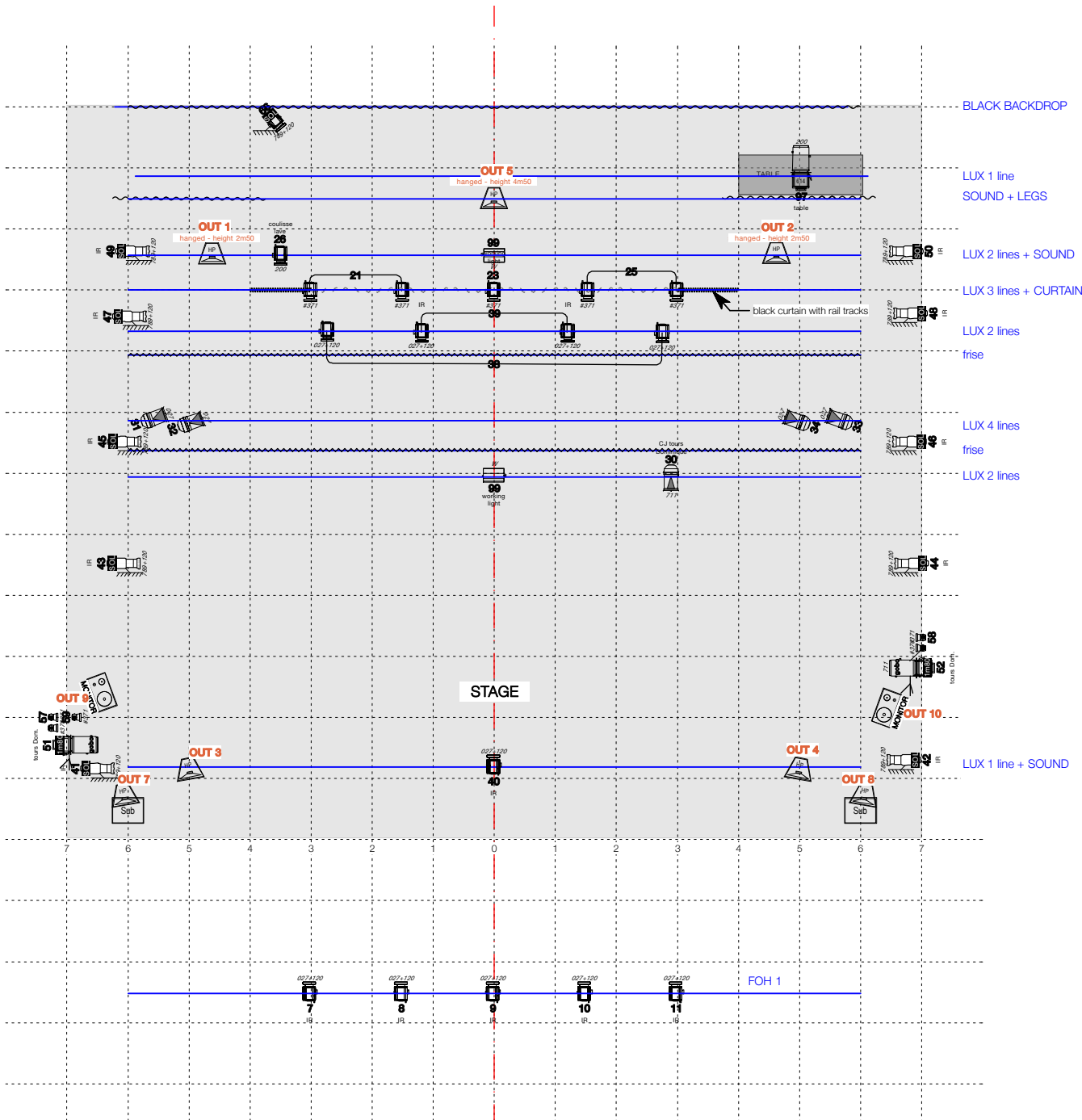
## **Dressing room and accomodation**

---

2 dressing room for 4 peoples (2 men and 2 women), with mirror and shower facilities.

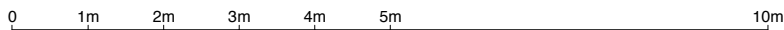
Thank you for providing a light catering and bottles of water.

Thank you for providing a parking for our van during all our stay.



**Legend**

	17 PC 650W		11 floor stands
	6 profile spot 1kW		2 booms
	10 short profile spot 1kW		
	1 PAR64 cp61		
	4 PAR64 cp62		
	2 Cyc 1kW		7 speakers
	5 F1 (pinspot)		2 monitors



# SHIVER

General plot

Théâtre standard

échelle: 1:100  
format papier: A4

1.0

imprimé le:  
Vendredi, 21 février 2014  
dessin:  
Stéphane Gattoni - +41 76 524 29 30  
fichier:  
Shiver\_generic.vwx

**Nicole**  
COMPAGNIE  
**Seiler**