

# *Playback*

## Technical Rider

update : march 25th 2010

### Team

---

Booking :	Tutu Production Véronique Maréchal et Simone Toendury	diffusion@nicoleseiler.ch T +41 (0)22 310 07 62
Tech management:	Stéphane Gattoni	technique@nicoleseiler.com Mobile +41 (0)76 524 29 30
Choreograph :	Nicole Seiler	info@nicoleseiler.com Mobile : +41 (0)76 562 78 94

Travelling people: 6 dancers  
2 technicians (Stéphane Gattoni et Nicole Seiler)  
  
1 tour manager  
  
-> **9 people on tour**

### Generality

---

Duration of the performance: **about 1h05** without intermission

The company require an 8-hour day before day of show, and then 4 hours day of show (12 hours of tech time in the theatre prior to the first performance)

**NB :** The performance is held in a total silence. Thank you for eliminate all the surrounding noises as much as possible

**If any of our requests are problematic, please don't hesitate to contact the technical manager of the company at least 2 weeks before the show. We can see what can be worked out.**

## Stage

---

**Min. stage width : 10 m (prefered 12 m)**

**Min. stage depth: 9 m (prefered 12 m)**

**Min. height: 5.50 m**

Flat floor

**White dance floor** (see plan attached) laid prior to company's arrival.

The Black Box depend on the venue. Please contact the tech manager to decide which type of black box will be installed in your venue.

We need also:

**2 pipes 7.20m length**

**5 chairs and 1 table (env. 60x150cm)** for accessories

**carpet** for the wings and the back of the screen

**Black and white gaffer tape**

## Dressing room and accomodation

---

Dressing room for 6 people (3 men and 3 women), with mirror and shower facilities.  
Thank you for providing a light catering and bottles of water

## Light

---

**1 memory lighting console min. 30 circuits**

**30 dimmers 2 kW**

**14 PC 650W with barndoors**

**10 Fresnel 1kW** with barndoors

**3 profiles 1 kW type 614sx**

**7 short profiles 50°** (type Juliat 613sx or ETC S4 25-50° or Strand SL 25-50°)

**9 dimming fluorescent tube 36W**, with hanging systems for 5 tubes

**2 F1 (PAR36)**

**7 floor stands**

**1 disco ball** (40 or 50 cm diameter, without motor)

All lighting instruments must be fitted with clamp and safety wire.

The house light must be controlled from the lighting desk.

Filters :

	<b>PC 650W</b>	<b>Fresnel 1kW</b>	<b>Profile</b>	<b>short profile</b>	<b>F1</b>
Lee195	2		1	7	
Lee209	2				
Lee789	2			7	
Rosco 53			1		
Rosco 371	2	10	1		
Rosco 372	10				2
Rosco 373	10				
Rosco 104		5			
Rosco 114	2				
Rosco 119	12				

### **DMX (vidéo shutter)**

1 DMX connection overstage

We will provide, upon receipt of detailed technical information of your venue, a specific light plot.

*The company provide:*

*1 DMX shutter*

*2 IR projectors*

## Sound

---

The sound comes from ABLETON LIVE

**1 sufficient loudspeakers and amplification for the entire audience in stereo.**

**2 loudspeakers and amplification on stage, and 2 subwoofers**, on the floor at the back of stage.

**1 mixing console 01V96**

**1 mini-jack – 2x jack cable**

**12 batteries AA (LR6) 1.5V**

*The company provide:*

*1 computer with sound card*

## Video

---

1 video connection VGA M/M vidéo operator -> center front of the stage

1 video connection VGA M/M vidéo operator -> overstage

1 XLR connection vidéo operator -> center front of the stage (remote)

**NB : 1 beamer must be on the floor at 10 m of the screen**

*The company provide:*

*2 beamers*

*1 computer + accessories*

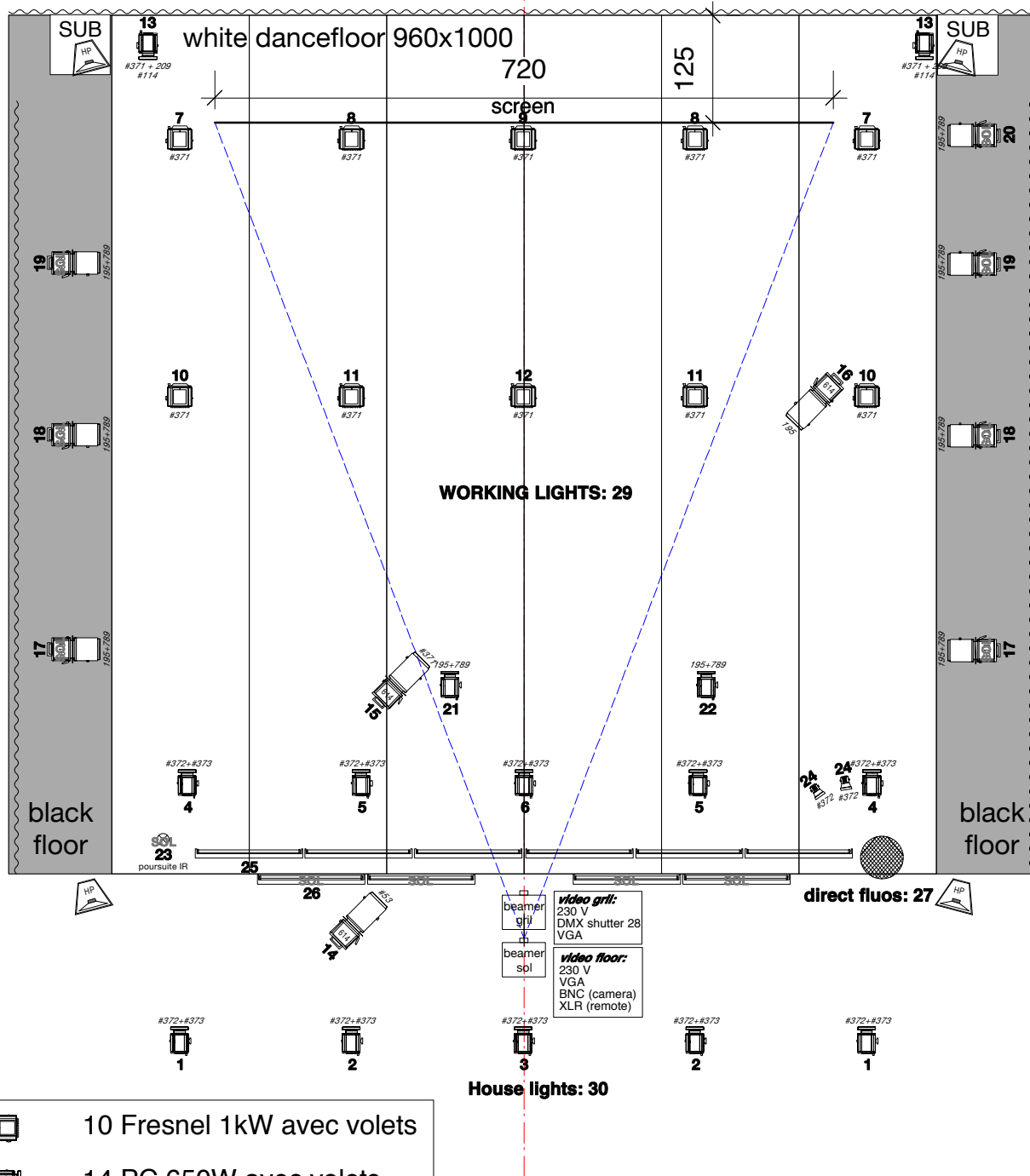
*1 camera*







*1 BNC cable 50m*

**The sound, video and lighting desks must be close. We must see all the stage from the position of the operators.**

**Crew**

<b>day</b>	<b>hours</b>	<b>to do</b>	<b>crew</b>
D-1	9h-13h	Pre-hang (lay and tape the dance floor, hang all masking)	1 stage manager 1 stage hand
	14h-18h	Get in Hang light-sound-video	1 light board operator 1 electrician 1 stage manager 1 sound + video operator
	19h30-22h	Light and vidéo focus	1 light board operator 1 stage manager
D	9h-13h	<i>tech time (if necessary)</i>	<i>1 light board operator</i> <i>1 stage manager</i>
	14h-15h	Sound Balance	1 sound operator
	15h-18h	Rehearsals	1 light board operator 1 sound operator
	18h-19h	Stage installation	1 stage manager
	20h30-21h30	Performance	1 light board operator 1 sound operator
	21h30-23h30	taking down	1 light board operator 1 stage manager 1 stage hand



-  10 Fresnel 1kW avec volets
-  14 PC 650W avec volets
-  7 profiles 613sx
-  3 profiles 614sx
-  9 solo fluorescent tubes
-  2 F1 (pinspot)

compagnie  
nicole  
seiler

# PLAYBACK

General plot

scale: 1:75  
paper: A4  
update: Lundi, 29 mars 2010

contact: Stéphane Gattoni - +41 76 524 29 30