

Cie Nicole Seiler /// **NINGYO**

Technical Rider

Update: may 6th 2008

Team

Booking:	Tutu Production Véronique Maréchal et Simone Toendury	diffusion@nicoleseiler.ch T +41 (0)22 310 07 62 Mobile +41 (0)76 562 78 94
Tech management:	Stéphane Gattoni	stephanegattoni@yahoo.fr Mobile +41 (0)76 524 29 30
Choreograph and video :	Nicole Seiler	info@nicoleseiler.com Mobile : +41 (0)76 562 78 94

Travelling people: 1 dancer
1 DJ (Letizia Renzini - letiziarenzini@gmail.com - +39 33 98 64 38 24)
1 light technician (Stéphane Gattoni)
1 video technician (Nicole Seiler)

1 tour manager

-> 5 people on tour

Generality

duration of the performance: **about 1h** without intermission

The company require an 8-hour day before day of show, and then 4 hours day of show (12 hours of tech time in the theatre prior to the first performance)

NB : If any of our requests are problematic, please don't hesitate to contact the technical manager of the company at least 2 weeks before the show. We can see what can be worked out.

Stage, scenery and properties

Min. stage width : 10 m (preferred 12 m)

Min. stage depth: 10 m (preferred 12 m)

Min. height: 5.50 m

Flat floor, IMPERATIVE

Black dance floor covering the entire stage, laid prior to company's arrival.

The whole audience must be able to see the floor of the stage.

We use no masking if the walls of the stage are black and quite flat. If not, we need full-stage **black molleton (NO velvet)** backstage. Please contact the tech manager to decide which type of black box will be installed in your venue.

We need also:

1 table (200cm x 80cm, height 80cm), covered with black velour.

1 little table (about 70cm x 40cm, height 60cm), covered with black velour.

1 chair, height 60cm

1 hot water point, less than 20m from the stage. We use about 500l for each performance. Please contact the tech manager to discuss which kind of water connection you have.

Black and white gaffer tape

NOTA BENE :

The performance require a complete blackout condition on stage and in the house. Ambient light from exit signs, aisle light and doors may disturb the performance. Thank you to make prior arrangements to darken, cover, shut off, or otherwise prevent the emission of disturbing light.

Light

1 memory lighting console, min 48 channels

24 dimmers 2 kW

7 PC 1 kW, (2 without lens)

10 PAR64, cp62

6 zoom profile 1 kW (type Robert Juliat 614sx)

1 short zoom profile (type Juliat 613sx or ETC S4 25-50°)

2 cyc 1 kW

1 pinspot (PAR36)

All lighting instruments must be fitted with clamp and safety wire.

The house light must be controlled from the lighting desk.

Gels:

	PC 1kW	Profile	Short Profile	PAR64	Pinspot
Lee241		1		10	
Lee711		1		10	
#371	3	5			1
#373			1		
#104				10	
#119	3				1
#132		2	1		

DMX (video shutter)

1 DMX connection at the middle of backstage on the floor

1 DMX connection at the middle of frontstage on the floor

1 DMX connection overstage (Light pipe)

We will provide, upon receipt of detailed technical information of your venue, a specific light plot.

The company provide:

3 DMX video shutters

Sound

All sound effects come from the DJ onstage.

1 sufficient loudspeakers and amplification for the entire audience in stereo.

2 loudspeakers and amplification on stage, on the floor at the back of stage.

1 mixing console, min 4 input and 4 output, with delay

For the DJ :

1 CD player (SONY if possible)
1 monitoring system (if necessary)
5 stereo cables RCA-Jack 6,3mm
1 DI

Hung at 4.5 m above stage:

1 static microphone (AKG CK91 or AKG C391B), connected to the DJ

The company provide:

*1 mixing console (for the DJ)
2 CD players
1 vinyl player
1 multieffect Alesis*

Video

1 video connection from the video operator to the center front of the stage (BNC male-RCA male)
1 video connection from the video operator to the center back of the stage (RCA male-RCA male)
2 video connection from the video operator to the center of the stage, 5.5m high (RCA male-RCA male)

The company provide:

*3 beamers
1 video mixing console
3 DVD players
1 camera SONY PD150 + magic arm*

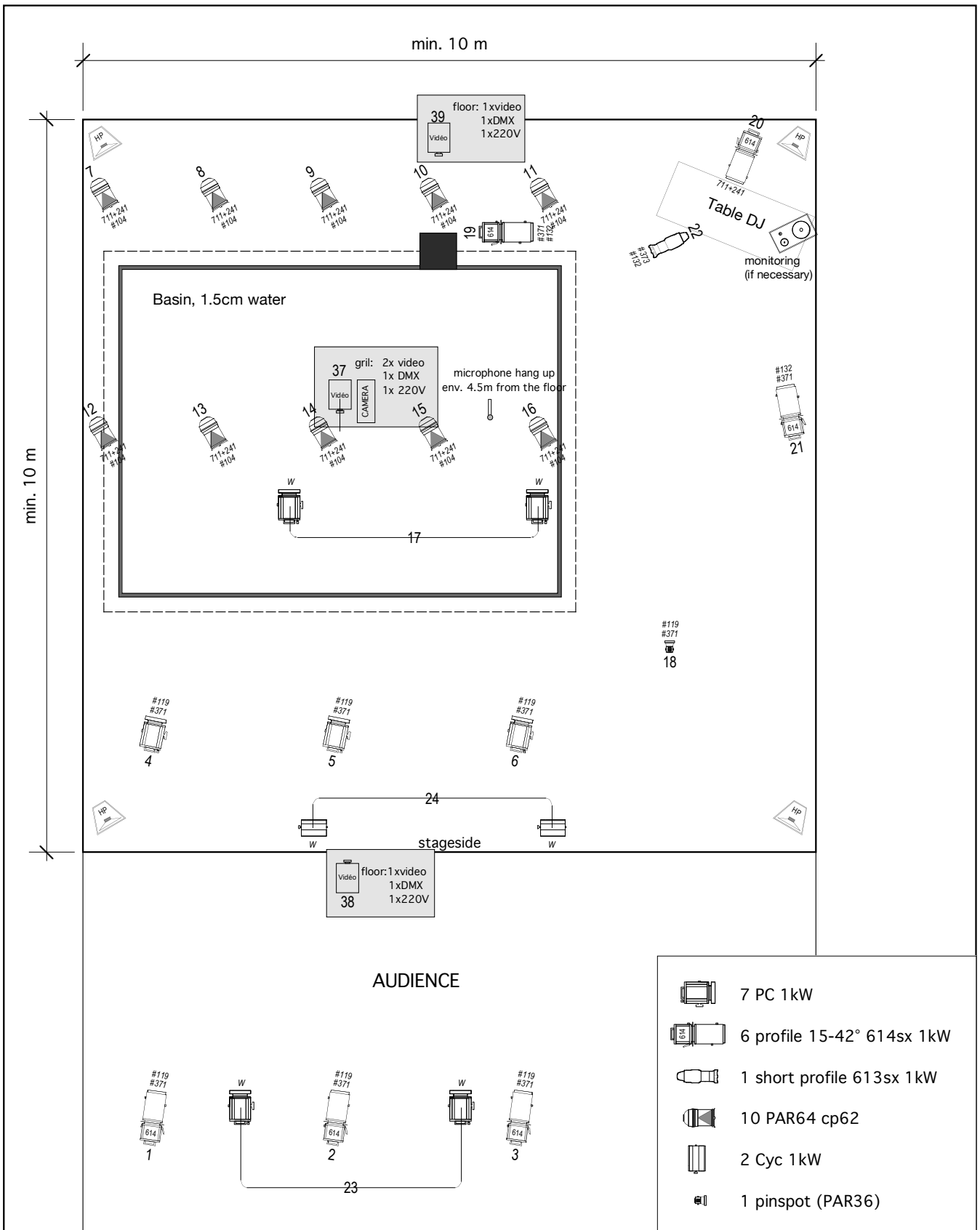
The sound, video and lighting desks must be close. We must see all the stage from the position of the operators.

Dressing room

1 dressing room for 1 person, with shower facilities

Crew

day	hours	to do	crew
D-1	9h-13h	Pre-hang (lay and tape the dance floor, hang all masking)	1 stage manager 1 stage hand
	14h-17h	Get in Hang light-sound-video	1 light board operator 1 electrician 1 stage manager 1 stage hand 1 sound + video operator
	17h-18h	Sound and video balance	1 sound + video operator
	19h30-23h	Focus and rehearsals	1 light board operator 1 stage manager
D	9h-13h	<i>tech time (if necessary)</i>	<i>1 light board operator 1 stage manager</i>
	14h-17h	Rehearsals	1 stage manager (baby-sitting) 1 light board operator (baby-sitting) 1 sound operator (baby-sitting)
	17h-19h	Stage installation	1 stage manager
	20h30-21h30	Performance	1 stage manager 1 light board operator 1 sound + video operator
	21h30-23h30	taking down	1 electrician 1 stage manager 1 stage hand



NINGYO
cie Nicole Seiler

General plan
scale 1:75

update: may 6th 08

tech management: Stéphane Gattoni - +41 76 524 29 30 - stephane.g@ttoni.ch