

Cie Nicole Seiler

Amauros

Technical Rider

update : nov. 2011

Team

Booking :	Tutu Production	contact@tutuproduction.ch T +41 (0)22 310 07 62
Tech management:	Stéphane Gattoni	technique@nicoleseiler.com Mobile +41 (0)76 524 29 30
Artistic Director :	Nicole Seiler	info@nicoleseiler.com Mobile : +41 (0)76 562 78 94
Travelling people:	4 dancers 2 technicians 1 choreographer 1 tour manager -> 8 people on tour	

General informations

Duration of the performance: 70 min without intermission

The company requires an 8-hour day before the day of the show, and then 4 hours on the day of the show (12 hours of tech time in the theatre prior to the first performance)

Note 1 : This show includes a lot of delicate live sounds. Thank you for eliminating all the surrounding noises as much as possible.

Note 2 : One part of the performance is performed in a total blackout. Thank you for eliminating as much as possible all lights in the house, including working lights, emergency lights, desk lights, ...

If any of our requests are problematic, please don't hesitate to contact the technical manager of the company at least 2 weeks before the show. Solutions can be worked out.

Stage

Min. stage width : 8 m (preferred 12 m)
Min. stage depth: 8 m (preferred 10 m)
Min. height: 5 m

Flat floor
Black dance floor

The Black Box depends on the venue. Please contact the tech manager to decide which type of black box will be installed in your venue.

Dressing room and accomodation

Dressing room for 4 people (2 men and 2 women), with mirror and shower facilities.
Thank you for providing a light catering and bottles of water.

Thank you to provide a parking for our van during all our stay.

Light

1 memory lighting console min. 30 circuits

36 dimmers 2 kW

4 PC 650W with barndoors

20 PC 1kW with barndoors

1 Fresnel 2kW with barndors

7 profiles 1 kW type 614sx

10 short profiles 50° (type Juliat 613sx ou ETC S4 25-50° ou Strand SL 25-50°)

8 pinspot (PAR36)

2 cyc 1kW (working lights)

10 floor stands

5 stands (height 1m50)

All lighting instruments must be fitted with clamp and safety wire.
The house light must be controlled from the lighting desk.

Gels: Rosco 371, 372, 373, 114, 119, 132 ; Lee 711

We will provide, upon receipt of detailed technical information of your venue, a specific light plot.

Video

1 composite video RCA/RCA from the desk to the center of the stage

1 alu tube about 2m long + 90°-hook (for hanging our videobeamer)

1 DMX connection at the center of the stage (for our video shutter)

The company will provide :

1 videobeamer

1 DVD player

1 DMX shutter

Sound

1 sufficient stereo loudspeakers and amplification for the entire audience, with separate sub-bass system (Type L'Acoustic MTD112 + SB115)

1 central cluster (type L'Acoustic MTD112)

If the audience has more than 150 seats, please provide a second stereo with a delay line.

1 loudspeaker + amp on the floor at the back of the stage, min 100W.

1 mixing console 01V96V2 (or Yamaha DM1000, DM2000, O2R), with min 8 outputs, The desk must be directly behind the audience (no separate room).

The sound comes from Ableton LIVE.

2 mics lines on stage + 1 output line (for our ear-monitors)

2 microphone Schoeps CMC5/MK4 or CMC6/MK4 (Neumann KM184A or des AKG 414 are also ok)
-> we can hire to you a Schoeps-pair if needed.

8 batteries AA (LR6) 1.5V

The company will provide:

1 computer with sound card

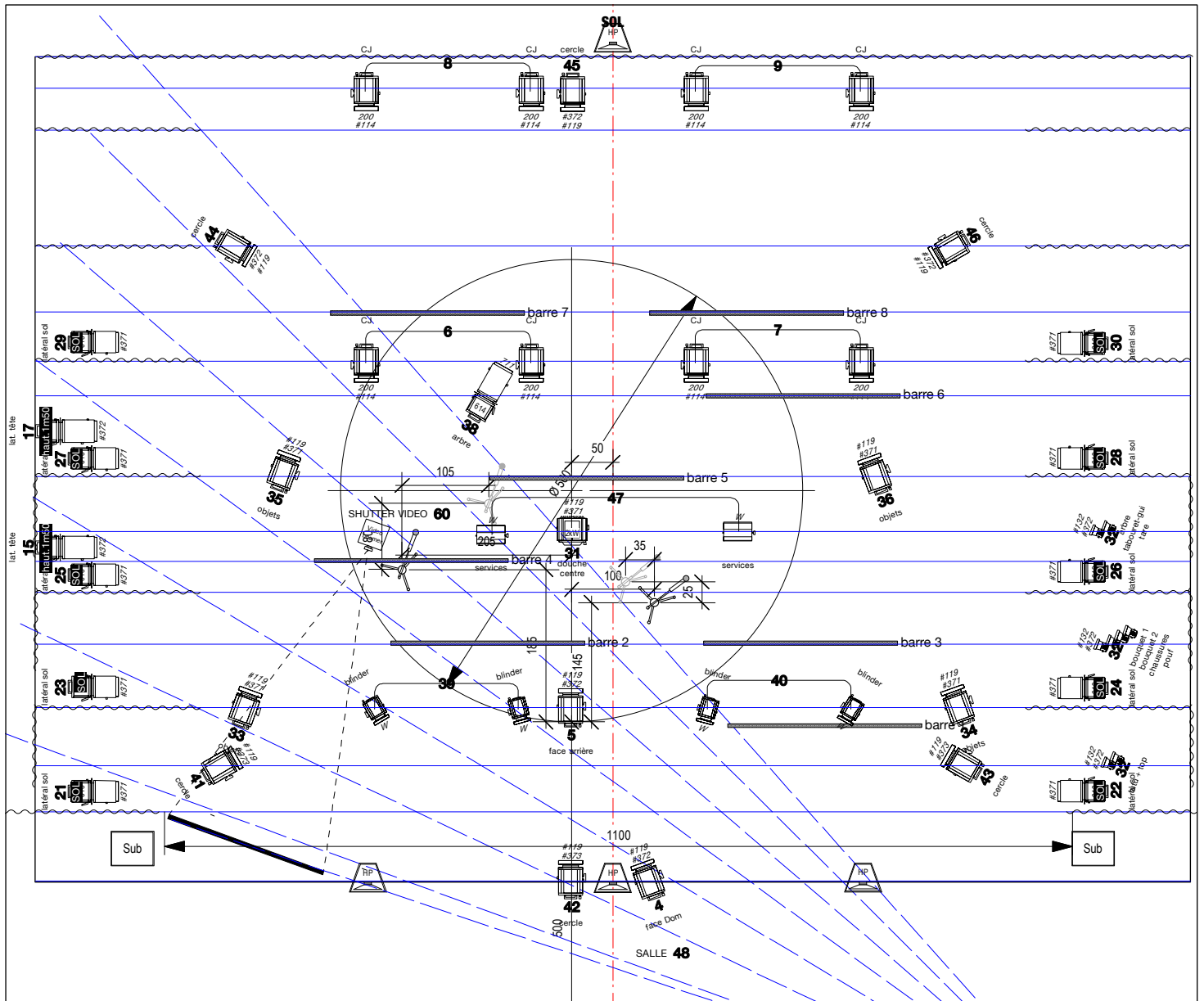
1 In-Ear set

2 microphone stands

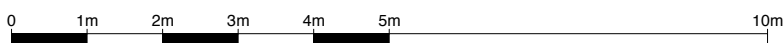
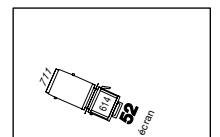
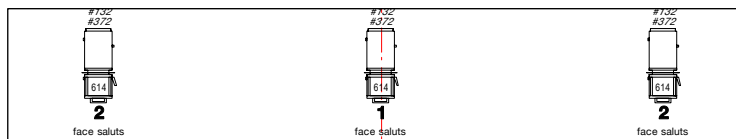
2 black XLR cables

Crew

day	hours	to do	crew
D-1	9h-13h	Pre-hang (lay and tape the dance floor, hang all masking)	1 stage manager 1 stage hand
	14h-18h	Get in Hang light-sound-video	1 light board operator 1 electrician 1 stage manager 1 sound + video operator
	19h30-22h	Light and vidéo focus	1 light board operator 1 stage manager
D	9h-13h	tech time (if necessary). Sound Balance	1 light board operator 1 stage manager 1 sound operator
	14h-15h	Sound Balance with dancers	1 sound operator
	15h-18h	Rehearsals	1 light board operator 1 sound operator
	18h-19h	Stage installation	1 stage manager
	20h30-21h45	Performance	1 light board operator 1 sound operator
	21h45-23h30	taking down	1 light board operator 1 stage manager 1 stage hand



Instruments	
	20 PC 1KW
	4 PC 650W
	10 déc. courte (type 613sx)
	7 déc. moy. 1KW (type 614sx)
	1 Fresnel 2kW
	8 F1 (pinspot)
	2 Cyclode 1KW



Amauros
cie Nicole Seiler

mise en scène: Nicole Seiler
scénographie: Vincent Deblue
lumière: Stéphane Gattoni

Plan d'implantation TOTAL

1.0

lieu: Théâtre générique
échelle: 1:75
format papier: A4
imprimé le: Mar, 11 oct 2011 4:17:10 PM

dessin:
Stéphane Gattoni - +41 76 524 29 30

Amauros_Generic.vwx