



ISSHH(क)

Technical rider

update: april 2016

Premiere at Theatre Arsenic in Lausanne (CH) the 19th of april 2016

Team

Booking :	mm - Michael Monney	touring@nicoleseiler.com Tel +41 (0)21 566 70 32
Tech management :	Stephane Gattoni	technique@nicoleseiler.com Mobile +41 (0)76 524 29 30
Artistic director :	Nicole Seiler	info@nicoleseiler.com Mobile : +41 (0)76 562 78 94
Travelling people :	7 dancers (2F + 5H) 2 techs (sound, light) 1 artistic director (1 tour manager) -> 10-11 people on tour	

General informations

Duration of the performance : 57 min. without intermission

The company requires an 8-hour day before the day of the show, and then 4 hours on the day of the show (12 hours of tech time in the theatre prior to the first performance)

If any of our requests are problematic, please don't hesitate to contact the technical manager of the company at least 2 weeks before the show. Solutions can be worked out.

Stage

Min. stage width : 11 m (idéal 14 m)
Min. stage depth : 12 m (idéal 14 m)
Min. height : 6 m

flat floor, white dance floor in good condition.
2 pieces of black dance floor on the sides (cf. plan).

The Black Box depends on the venue. Please contact the tech manager to decide which type of black box will be installed in your venue.

A white wooden screen of 300x50cm is hanged at the center of the stage.



Light

NOTE : the final list of projectors can be adapted to the venue, according with the company.

- 90 dimmers 10A (2kW) DMX protocol, without house lighting

- 18 PC 1kW (or Fresnel 1kW)
- 6 profiles spot 1kW, type 614sx
- 1 profiles spot 2kW, type 714sx, with iris
- 42 PAR64 cp62
- 16 PAR64 cp61

- 2 DMX 5 pts, from the lighting console to the gril (prévoir un splitter si nécessaire)
- 2 electricity socket 240V/50Hz / 10A at the gril
- electric cables for the projectors of the company

Gels (to provide) : Rosco #100, #101, #114, #119 / Lee 100, 157, 502, 710, 719, 728

All lighting instruments must be fitted with clamp and safety wire.
The house light must be controlled from the lighting desk.

- Please provide 1 pipe 9m length + pipes and hooks for special rig (if necessary)

the company provides :
1 lighting desk
12 LED projectors Selador
14 home-made car lights

Sound and video

- 1 professionnal stereo system, with separate subs (type L'acoustics, Meyer Sound, D&B).
- 2 stereo speakers hanged backstage, min 15''
- 2 speaker on the floor, 8'' ou 10''
- all cables

- 1 mixing desk min. 8 in/8 out

- 1 beamer min. 6000 lumens, with internal shutter or DMX shutter
- 1 HDMI or VGA cable

the company provides :
1 computer for sound + sound interface
1 computer for video

Dressing room and accomodation

2 dressing room for 7 people (2 men and 5 women), with mirror and shower facilities.
Thank you for providing a light catering and bottles of water.

Thank you for providing a parking for our van during all our stay.

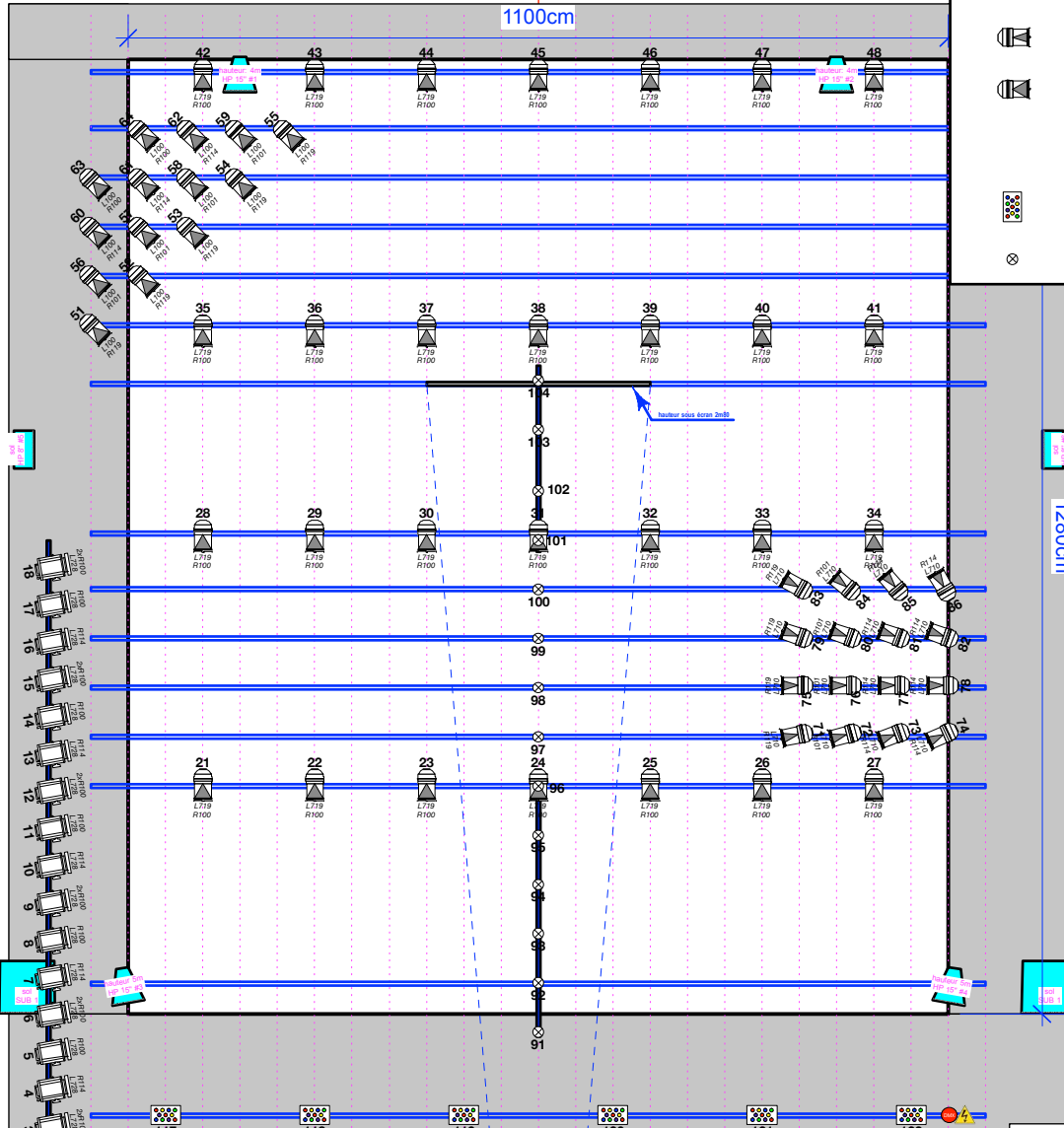
1 internet access (wifi or ethernet)

Crew and typical planning

day	hours	To do	Stage manager	Stage hand	Light manager	Light tech	Sound manager	Dresser
		White dance floor installation	1	1				
D-1	9h-13h	Light and sound setup Costumes cleaning	1		1	2	1	1
	14h-18h	Light and sound setup	1		1	2	1	
	18h-19h	Sound balance					1	
	19-22h	Light focus	1		1	1		
D	9h-13h	Tech time	1		1		1	
	14h-18h	Rehearsal	1		1		1	
	20h-21h	PERFORMANCE	1		1		1	
	21h15-23h	Taking down	1		1	2	1	

If more than 1 performance is played, thank you to provide 1 person for cleaning the costumes.

	PC 1kW	18
	découpe S4 25-50° 750W	6
	déc. moy. 2kW (type 714sx)	1
	PAR64 cp61	16
	PAR64 cp62	42
	Selador	12
	Phare	14



TITRE PROJET
ISSHH

TITRE PLAN
plan TOTAL

DATE CRÉATION 8.4.16	ÉCHELLE 1:100
DATE MODIFICATION 4.5.16	FORMAT PAPIER A4
DATE IMPRESSION 25.5.16 17:18	VERSION v1

AUTEUR PLAN
Stéphane Gattoni +41 76 524 29 30
Isshh_generic.vwx

Nicole
COMPAGNIE
Seller

COORDINATION
TECHNIQUE

